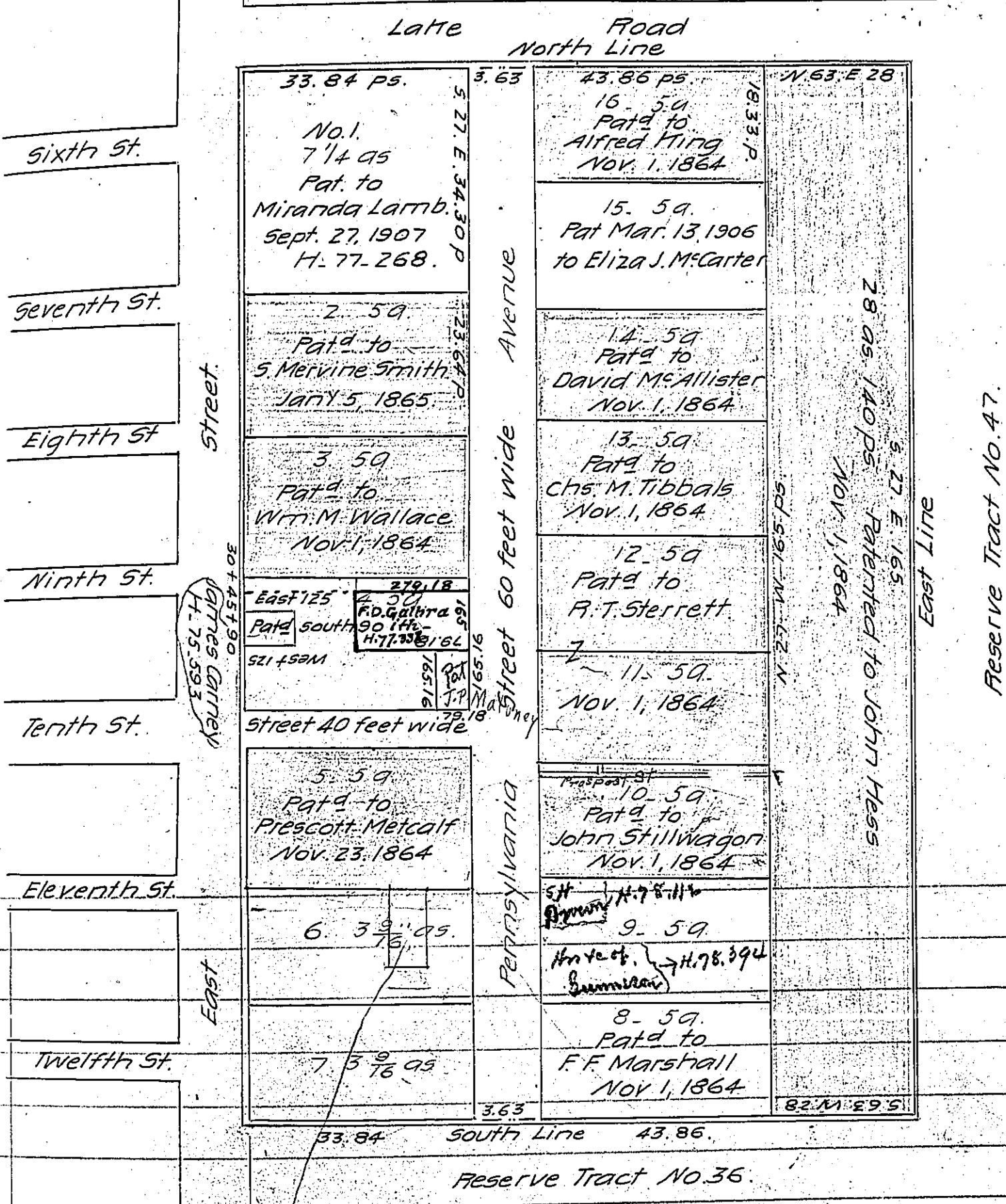


FORM NO 1.

Reserve Tract No. 38.



Pat to Louise Elber H. 78-16

Plat of the A.W. Brewster Farm as Recorded in Orphan Courts Docket No. 4 at page 701.

IN TESTIMONY that the above is a copy of the original remaining on file in the Department of Internal Affairs of Pennsylvania, made conformably to an Act of Assembly approved the 16th day of February, 1833, I have hereunto set my Hand and caused the Seal of said Department to be affixed at Harrisburg, this eighteenth day of June 1908

Henry Houck
Secretary of Internal Affairs.